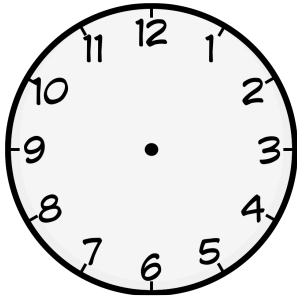


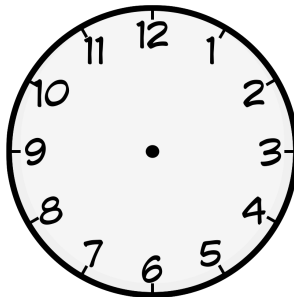
la hora

1 Dibuja las manitas de los relojes según la hora indicada.

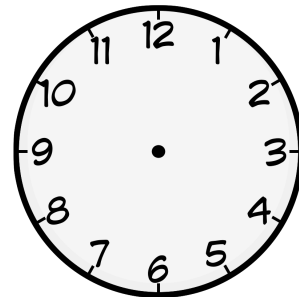
Es la una y cuarto.



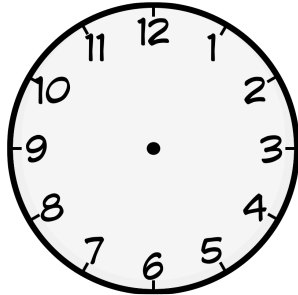
Son las cuatro en punto.



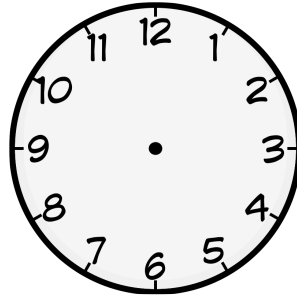
Son las dos y media.



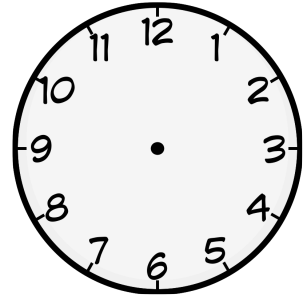
Son las ocho menos diez.



Son las diez menos veinte.

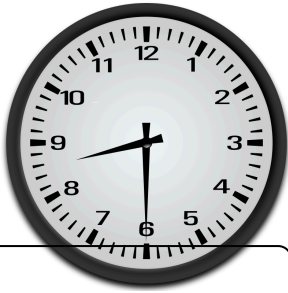


Son las doce menos cuarto.



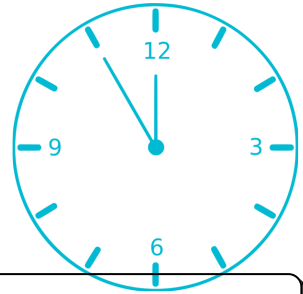
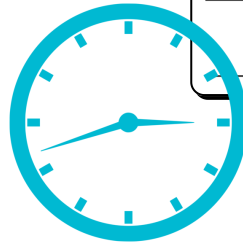
2 Apunta la hora correcta de los relojes.



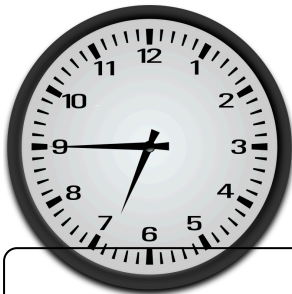


Blank writing box with three horizontal lines.

Blank writing box with three horizontal lines.

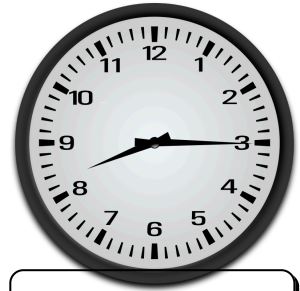


Blank writing box with three horizontal lines.

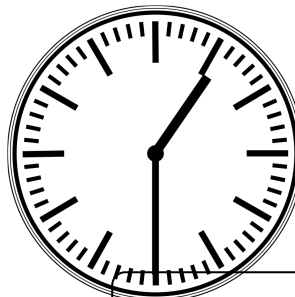
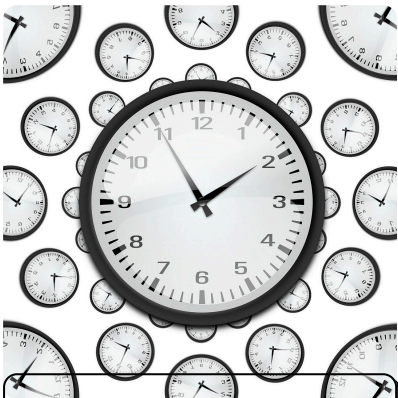


Blank writing box with three horizontal lines.

Blank writing box with three horizontal lines.



Blank writing box with three horizontal lines.



Blank writing box with three horizontal lines.

Blank writing box with three horizontal lines.